

Hanley Wood

K029

Accessibility thru' Universal Design

F03

Ramesh Gulatee, Architect

9/27/2013



# Copyright Materials

**This presentation is protected by US and International Copyright laws. Reproduction, distribution, display and use of the presentation without written permission of the speaker is prohibited.**



© LifeCare Design Studio, LLC 2013



Credit(s) earned on completion of this course will be reported to **AIA CES** for AIA members. Certificates of Completion for both AIA members and non-AIA members will be available on-line approximately 4-6 weeks after the program.

**CES** for continuing professional education. As such, it does not include content that may be deemed or construed to be an approval or endorsement by the AIA of any material of construction or any method or manner of handling, using, distributing, or dealing in any material or product.

---

**Questions related to specific materials, methods, and services will be addressed at the conclusion of this presentation.**

This course is registered with **AIA**



# Learning Objectives

---

At the end of the this course, participants will be able to:

1. Understand universal accessibility concepts
2. Identify and modify non-workable designs
3. Compare UD v/s non UD designs
- 4, Source and Identify UD based designs & products

# Course Description

---

All Americans will inevitably suffer from accessibility issues in their lifespan. These issues would arise due to...

- a) **Diagnosis**
- b) **Aging process**
- c) **Accidental mishaps and combat related Injuries**
- d) **Life Style/Situations**

ADA: The Americans with Disabilities Act (ADA) addresses issues faced by Americans with physical and mental impairments and is applicable to about (16%) or 54m Americans. ADA design guidelines establish minimal accessibility standards.

UD: Universal Design (UD), on the other hand, applies to the broadest possible spectrum of American population irrespective of age or abilities. UD is a multifaceted accessibility enabling paradigm; i.e., Keyless Entry, Swiss Army Knife, Smart Phone etc. The market success of UD based products i.e., I-Phone is undeniable and shows that such designs sell by themselves.

**This presentation, through illustrations and case studies, will endeavor to inform and educate the attendees that Universal Design based architecture opens up tremendous market opportunities.**

# Universal Design (UD)

## Why bother when...

- Myth #1: The ADA and other disability rights laws have created equality
- Myth #2: Universal Design only helps people w/disabilities & older people
- Myth #3: Universal Design is simply good Ergonomic Design
- Myth #4: Improvements in healthcare & medical sciences are reducing the incidence of functional limitations
- Myth #5: Universal Design can't sustain itself in the marketplace because people who need it most cannot afford it

# Worldly Facts

If you could fit the entire population of the world into a global village consisting of 100 people, maintaining the proportions of all the humans living on the Earth, that village would consist of the following...

**57 Asians**

East/Far East and NZ & Australia

**21 Europeans**

Eastern/Western Europe

**14 Americans**

North/Central & South Americas

**8 Africans**

Africa/Middle East

**US Population: 316 m represents 4.5% of the earth's population**

**or**

**fewer than 5 people in the global village**

# USA Facts

## 2010 Census

If we could fit the entire US population (316m) in to a room of 100 people maintaining the proportion of Americans suffering from various accessibility issues,, the room would have the following demographics.

Retired/Baby Boomers	24 (74m)
Individuals w/Special Needs	16 (54m)
War Veterans	8 (24m)
Life Style.. (Obesity, Pregnancy, OSHA Mishaps)	rest of us



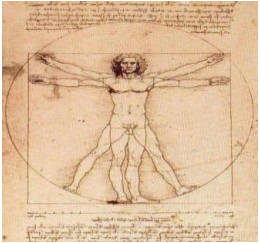
# ADA ( circa...1980) Disability is in our Mindset...

© Randy Glasbergen  
glasbergen.com



**“I’m not disabled or differently-abled or specially-abled or exceptionally-abled. I’m an accountant in a wheelchair.”**

# Design based Accessibility...



**Traditional Design:** Design based on needs similar to that of an able-bodied individual.



**ADA compliant Design:** Design based on minimum accessibility standards guidelines applicable to a special needs individual.



**Universal Design:** Design for broadest spectrum of people without a specific user in mind.



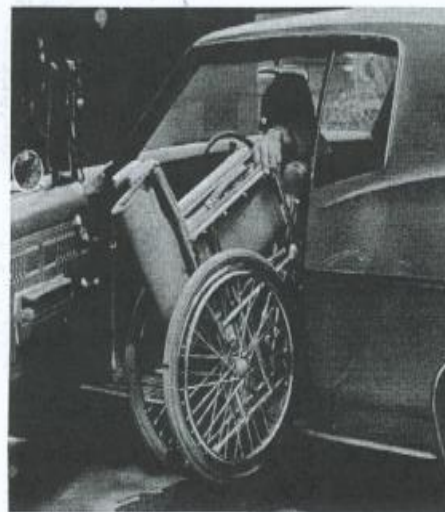
# Access to Mobility... Pre-ADA



1



2



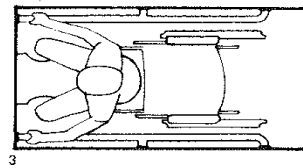
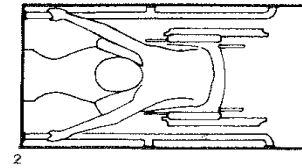
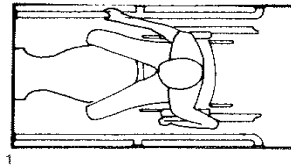
4



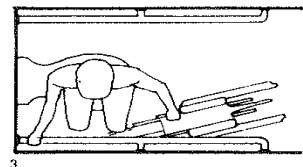
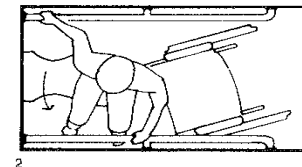
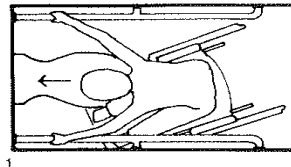
5

# Pre-ADA Bathroom

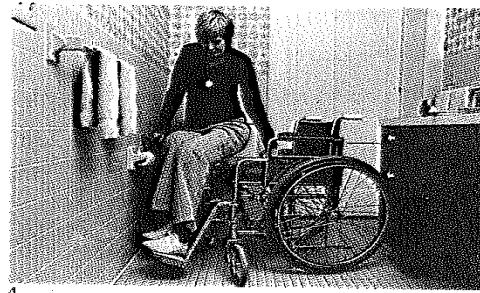
Front transfer



Front transfer with twist turn



Side transfer with diagonal turn



# Pre-ADA Bathroom



1



2



3



4



5

Transfer from wheelchair  
to built-in bathtub seat

# ADA & UD based Transportation Accessibility

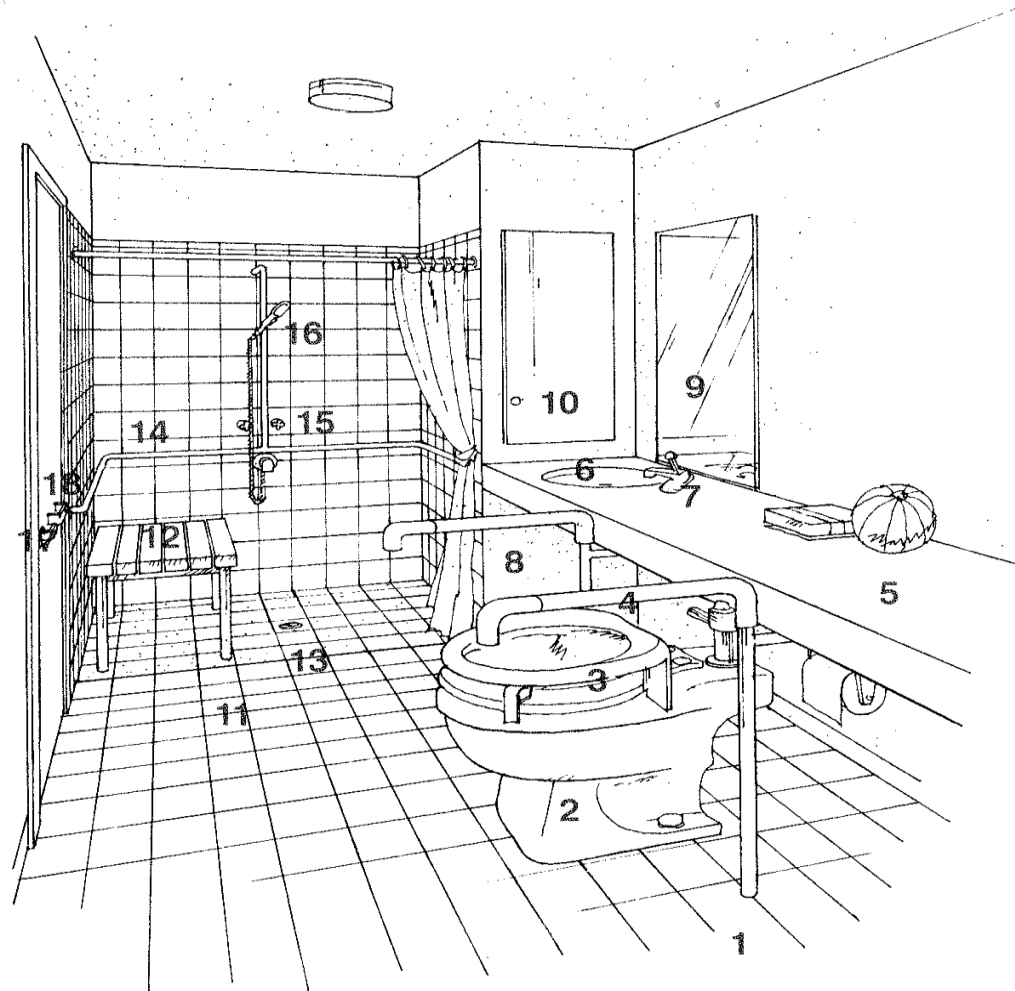
## Trains, Planes, Automobiles and Wheelchairs



# Universal Design Wheel Chairs



# ADA based Bathroom

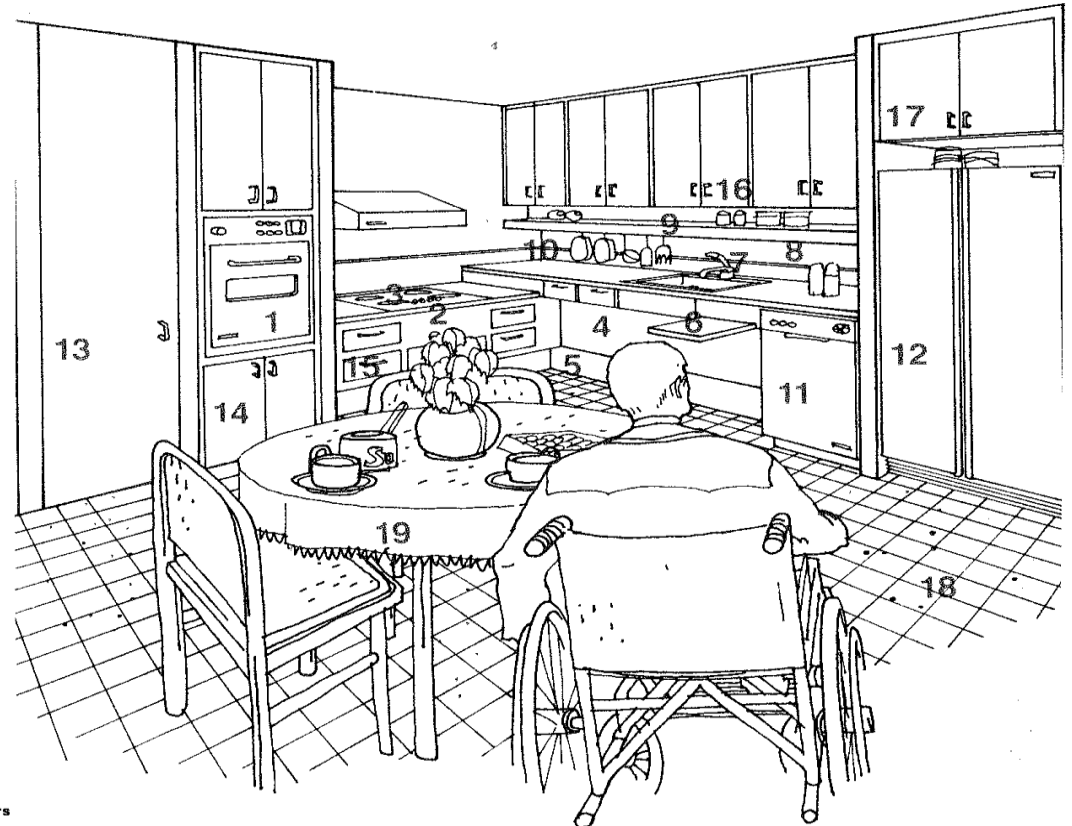


1. Space for a wheelchair either side of toilet
2. Toilet with recessed base
3. Adjustable height toilet seat or seat extender
4. Swing-away grab bars
5. 27"/69 cm-deep counter
6. Washbasin within reach of the seated position on the toilet
7. Mixing faucet, lever handle, within reach of the seated position on the toilet
8. Knee space under cold drain pipe covered or insulated
9. Mirror, lower edge no higher than 36"/91 cm
10. Medicine cabinet within reach
11. Space for transfer to shower seat
12. Freestanding shower seat can be placed either end of shower, or removed
13. No curb for shower: the wheelchair can wheel directly into the shower; shower stall floor slopes to center drain
14. Grab bar, three sides of shower stall
15. Controls centered on back wall of shower stall
16. Hand shower
17. Outswinging bathroom door, lever handle
18. Door pull, hinge side of door



# ADA based Kitchen/Dining

1. Wall oven, for easy access, open at counter height
2. Cooktop controls at the front, to avoid burning
3. Cooktop and counter, 30"/76 cm to 33"/84 cm height
4. Knee space under sink counter to allow sitting in wheelchair at counter
5. High recessed base under cabinets to accommodate wheelchair pedals
6. Pullout work shelf, 30"/76 cm to 33"/84 cm at standard height counters
7. Mixing faucet at sink, lever handle
8. Cove lighting under wall cabinets, bulb replacement within reach range
9. Shallow shelf over sink counter within reach range
10. Wall space within reach over sink counter, used for hanging utensils
11. Front-loading dishwasher
12. Side-by-side refrigerator doors to allow access to refrigerator and freezer
13. Full height storage closet for easy access
14. Cabinet space under wall oven within reach range
15. Drawers under cooktop and counter for easier access
16. Easy grip cabinet door pulls
17. High cabinets (out of reach for the chairbound) for other users
18. Smooth, nonskid flooring, open spaces for wheelchair passage
19. Round table to avoid corners, legs, or pedestal base with no apron to allow for wheelchair



# ADA Bathroom



# Principles of Universal Design

<b><u>Equitable use</u></b>	useful for people with diverse abilities	<b>Automatic Door Opener</b>
<b><u>Flexibility in use</u></b>	accommodate range of individual preferences	<b>Swiss Army Knife</b>
<b><u>Simple &amp; interactive use</u></b>	easy to understand regardless of the users experience, knowledge, language skills or ability level	<b>I-phone, Nest Tstat</b>
<b><u>Perceptible information</u></b>	communicate necessary information effectively regardless of the user/s abilities.	<b>IKEA products</b>
<b><u>Tolerance for error</u></b>	minimize hazards & adverse consequences of accidental or unintended actions.	<b>Fuses &amp; Circuit Breakers</b>
<b><u>Low physical effort</u></b>	efficient & comfortable in use with a minimum of fatigue	<b>battery powered screw driver w/interchangeable bits</b>
<b><u>Size/space for approach &amp; use</u></b>	appropriate size and adequate space should be provided for approach, reach, manipulation and use regardless of users.	

# Access

Key Hole, Combination Lock, Card Entry, Keyless Entry

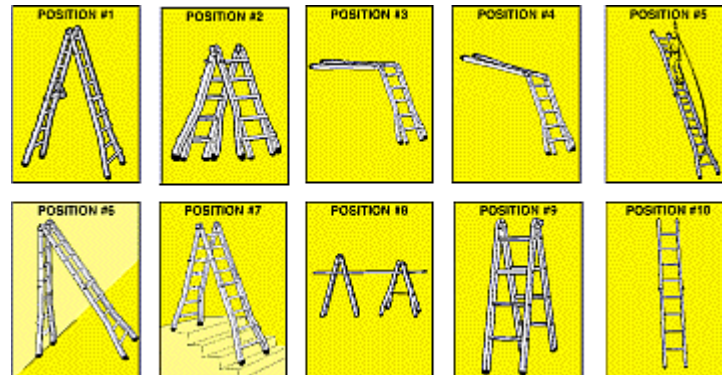


# Universal Design design evolution



# Universal Design

multiple usage products



# Universal Design Communication Accessibility...



# Universal Design

evolution: manual/programmable/web based





# UD based Bathroom



# UD based Kitchen

adjustable height countertop and overhead cabinets



# Universal Design Appliances



Gaggenau LiftMatic Oven  
Source: [gaggenau.com](http://gaggenau.com)

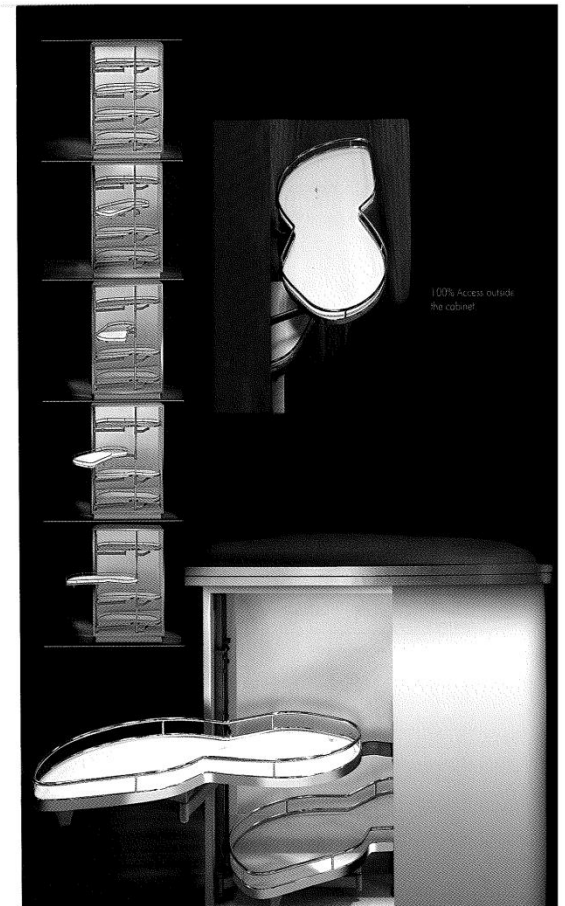
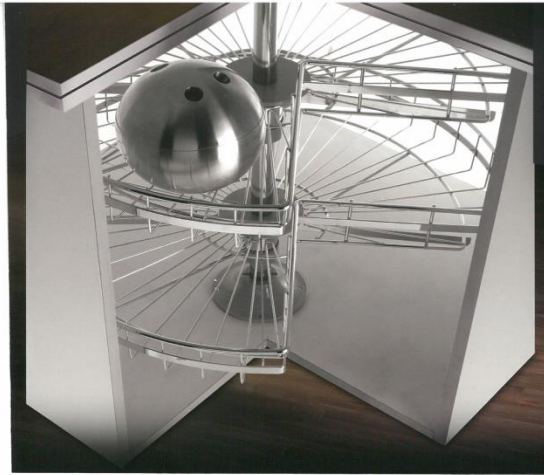
# Universal Design

## Kitchen Organizer System



# Kitchen

## UD v/s non UD Storage Options



# Universal Design

## Kitchen Organizer Systems



# Universal Design Robotics/Adaptive Technologies



# Universal Design: Assistive Technology & Communication



St.Peter's Square, Rome/Italy



# Universal Design

Barrier Free Design, Enabling Design, Multi-Generational Design, Design for All and more

....

a mindset

to create a live/learn/work/play environment that can be used by the broadest spectrum of human beings irrespective of age or abilities

# Universal Design

## Advocacy Organizations

### Organizations

---

US Access Board	<a href="http://access-board.gov">access-board.gov</a>
FCC Media/Internet/Communications	<a href="http://fcc.gov">fcc.gov</a>
Cast Center for applied special technology	<a href="http://cast.org">cast.org</a>
ATIA Assistive Technology Industry Association	<a href="http://atia.org">atia.org</a>

### Industry

---

Oxo (household products)	<a href="http://oxo.com">oxo.com</a>
GE (appliances)	<a href="http://ge.com">ge.com</a>
Hafele (accessibility related products)	<a href="http://hafele.com">hafele.com</a>
MYOH (accessibility related storage organizer products)	<a href="http://myohamerica.com">myohamerica.com</a>
Pressalitcare (Bath/Wash Room/Kitchen Accessories)	<a href="http://pressalitcare.com">pressalitcare.com</a>
Toto (Bath/Wash Room Fixtures and Accessories)	<a href="http://toto.cm">toto.cm</a>
Leufel (Bath/Wash Room Fixtures and Accessories)	<a href="http://leufel.com">leufel.com</a>
Kohler (Bath/Wash Room Fixtures and Accessories)	<a href="http://kohler.com">kohler.com</a>

# This concludes The American Institute of Architects Continuing Education Systems Course

---

**Hanley Wood**

**Ramesh Gulatee, Architect, IIL/WI, NCARB**

**[rgulatee@lifecaredesignstudio.com](mailto:rgulatee@lifecaredesignstudio.com)**

**Tel. 847 946 6663**

**[www.lifecaredesignstudio.com](http://www.lifecaredesignstudio.com)**

